



Reference Ground Truth System

Efficiently access massive and reliable ground truth data

Automatically evaluate every sensor in your DuT systems



RoboSense combines high-performance sensor systems with mature AI perception algorithms to provide a set of accurate, efficient, complete, and customizable sensory performance evaluation toolchains.

The system solves the problems of high-cost, low-efficiency, and error-prone manual calibration, which lack evaluation tools and mature toolchains. The Reference significantly improves project development efficiency and accelerates the mass production process of AD and ADAS applications.

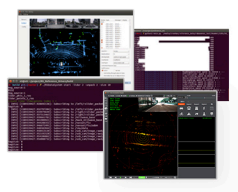
Reference Advantages



High-performance and mature sensor system



Systematic, integrated installation process design.
Comprehensive system toolchain, with no more car modifications



Comprehensive Toolchain



Over 15 years of R&D experience in point cloud algorithm technology

RoboSense / Suteng Innovation Technology Co., Ltd.

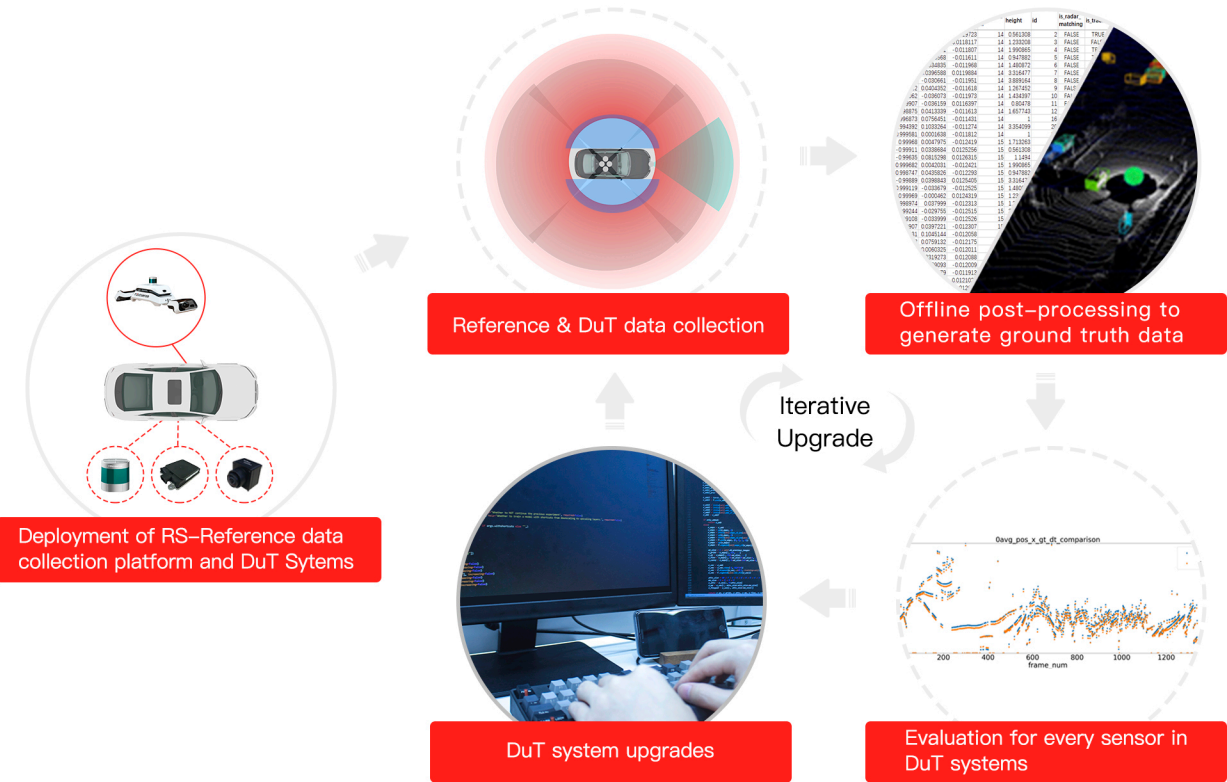
RoboSense Global Headquarters – Building 9, Block 2, Zhongguan Honghualing Industry Southern District, 1213 Liuxian Avenue, Taoyuan Street, Nanshan District, Shenzhen, China



Q RoboSense LiDAR

www.robosense.ai

Reference Validation Workflow



Ground Truth

