



M3

Next-gen long-range LiDAR with 940nm tech

M3, the first long-range LiDAR sensor on the M Platform, delivers 300m range at 10% reflectivity and 0.05° x 0.05° angular resolution. The M3 is built on mature RoboSense 2D scanning technology and utilizes 940nm wavelength for its high-performance capabilities.

Wavelength	940nm	Range	300m@10%
ROI angular resolution	0.05° x 0.05°	FOV (H x V)	120°x25°

Product Advantages



Deep expertise in 2D scanning technology



Mature technology in TX and RX



Continuous iteration and seamless upgrade

RoboSense / Suteng Innovation Technology Co., Ltd.

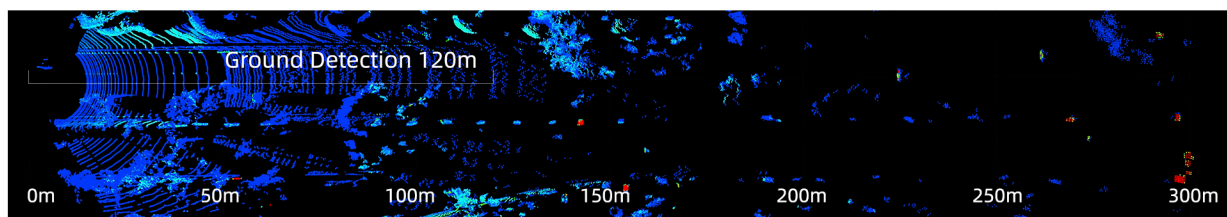
RoboSense Global Headquarters – Building 9, Block 2, Zhongguan Honghualing Industry Southern District, 1213 Liuxian Avenue, Taoyuan Street, Nanshan District, Shenzhen, China



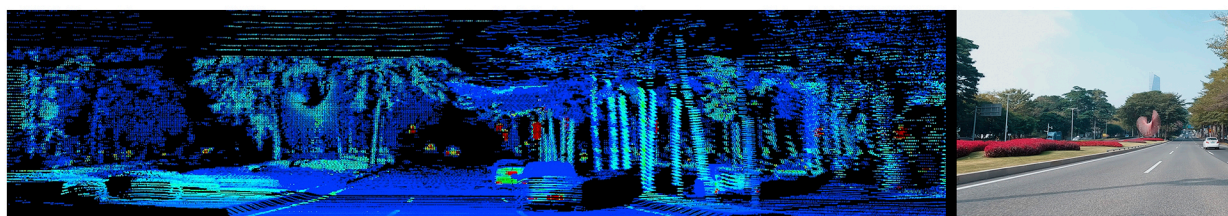
RoboSense LiDAR

High performance point cloud

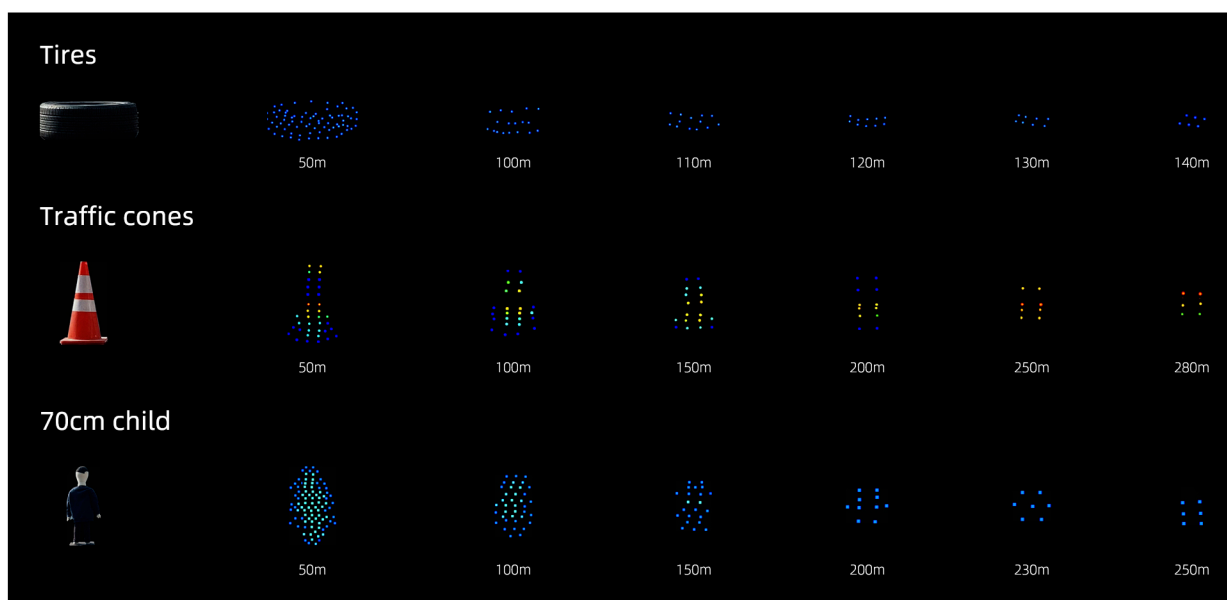
Longer ranging: 300m@10%



ROI angular resolution: $0.05^\circ \times 0.05^\circ$



Effective detection of distant small objects



Mature technology for project consistency



2D scanning

Utilized since 2016,
RoboSense's 2D scanning
is mature.



VCSEL

Advancing robust
manufacturing capabilities.



SiPM

A mature, mainstream
industry component.

RoboSense / Suteng Innovation Technology Co., Ltd.

RoboSense Global Headquarters – Building 9, Block 2, Zhongguan Honghualing Industry Southern District, 1213 Liuxian Avenue, Taoyuan Street, Nanshan District, Shenzhen, China



RoboSense LiDAR

www.robosense.ai